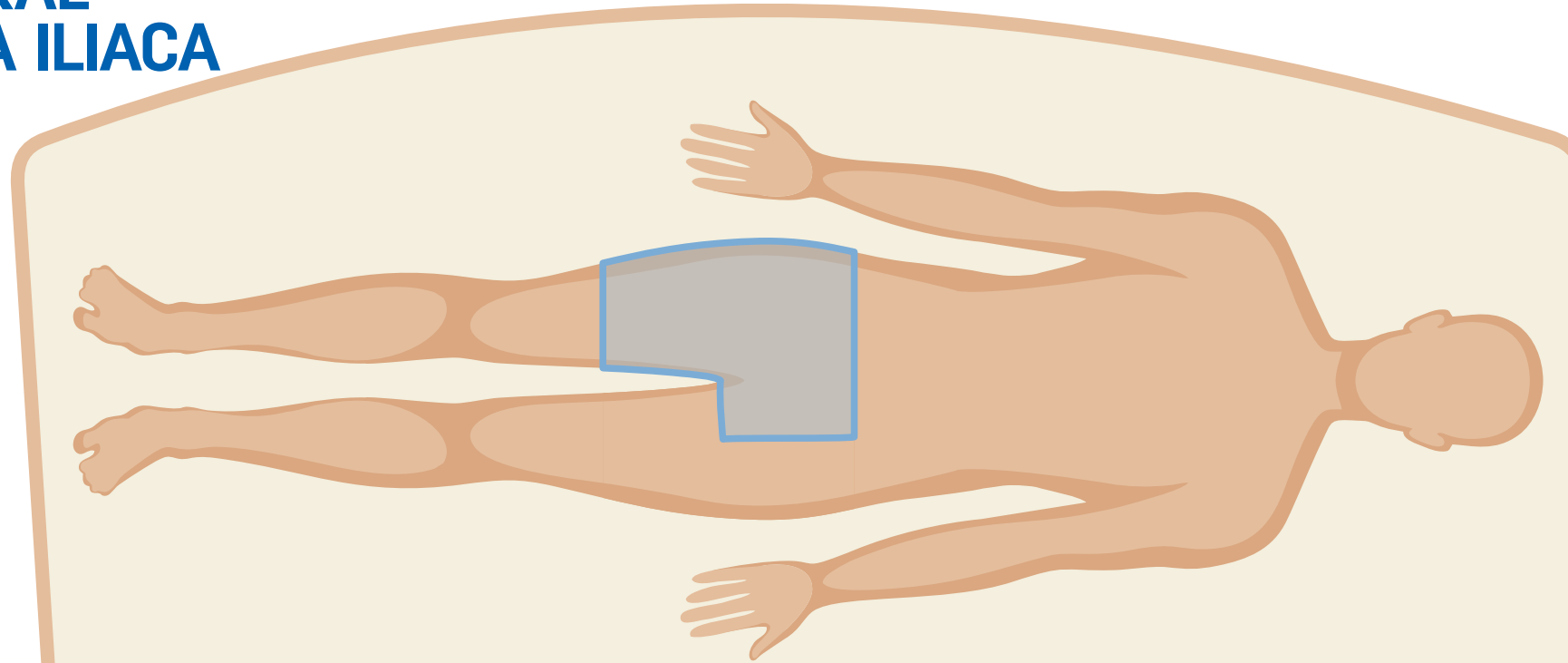


FEMORAL FASCIA ILIACA

DISTAL



LEGEND:

- SQ - Subcutaneous Tissue
- FA - Femoral Artery
- FN - Femoral Nerve
- LFCN - Lateral Femoral Cut Nerve

NYSORA 
SIMULATORS.COM

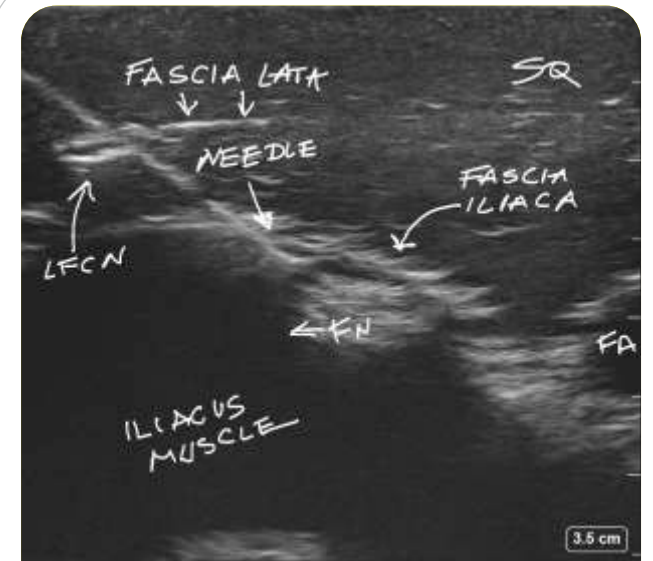
INSTRUCTIONS FOR CARE

1. Use ONLY needles with sharp bevel tip and diameter $\leq 22G$ to preserve the life-span of the ULTRASOUND SIMULATOR
2. Using needles of large caliber may create permanent damage, needle insertion track marks and require replacement of the tissue SIMULATOR insert sooner
3. **When practicing injection:**
 - a. Use only sterile water
 - b. Wipe off and dry the SIMULATOR before storing

Warranty

Your **ULTRASOUND SIMULATOR** includes 1-Year limited warranty against manufacturing and material defects. Visit www.NYSORASIMULATORS.com/support for further information to register your SIMULATOR and activate the warranty

PL006 RevB



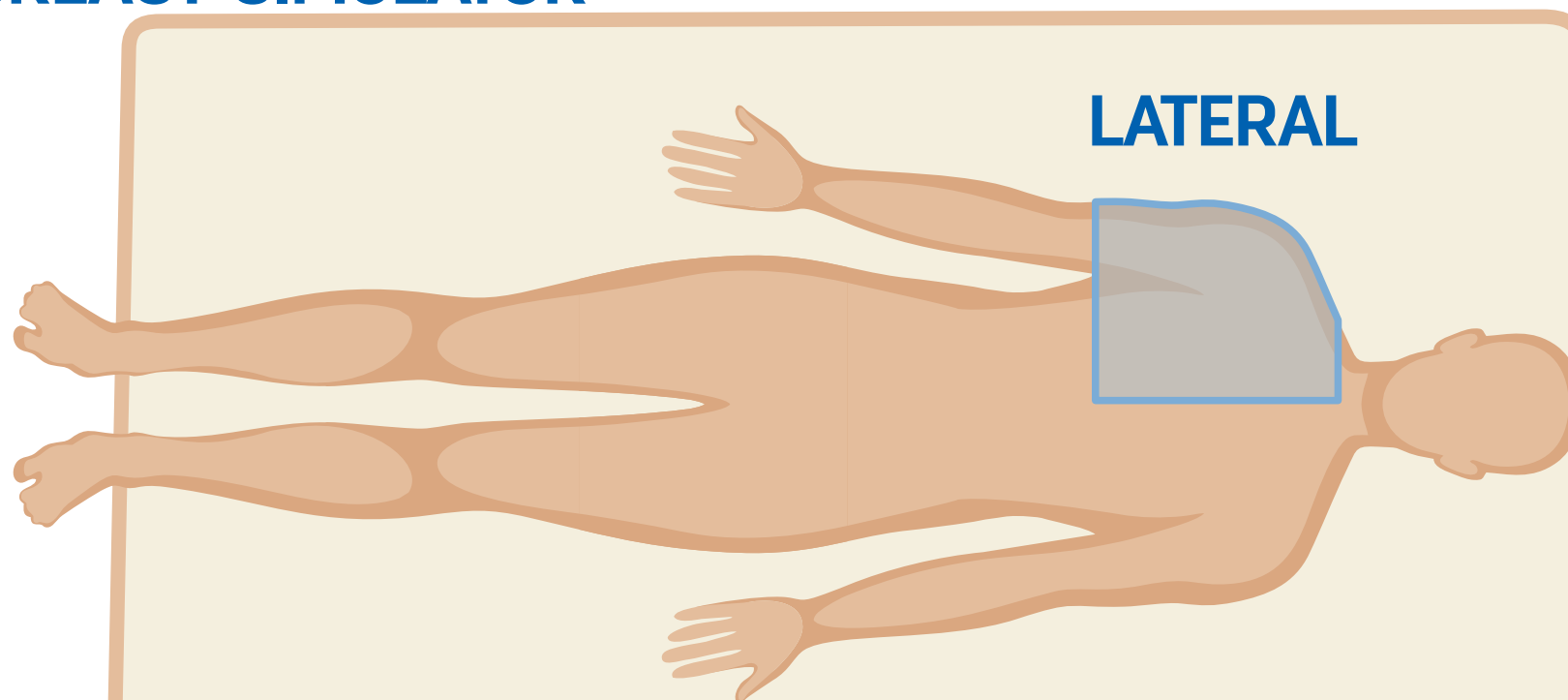
SIMULATOR IN USE

NYSORA  **SIMULATORS™**

DISTAL

FEMORAL & FASCIA ILIACA

OPEN BREAST SIMULATOR



INSTRUCTIONS FOR CARE

1. Use ONLY needles with sharp bevel tip and diameter $\leq 22G$ to preserve the life-span of the ULTRASOUND SIMULATOR
2. Using needles of large caliber may create permanent damage, needle insertion track marks and require replacement of the tissue SIMULATOR insert sooner
3. **When practicing injection:**
 - a. Use only sterile water
 - b. Wipe off and dry the SIMULATOR before storing

Warranty

Your **ULTRASOUND SIMULATOR** includes 1-Year limited warranty against manufacturing and material defects. Visit www.NYSORASIMULATORS.com/support for further information to register your SIMULATOR and activate the warranty

NYSORA SIMULATORS.COM

PL006 RevB

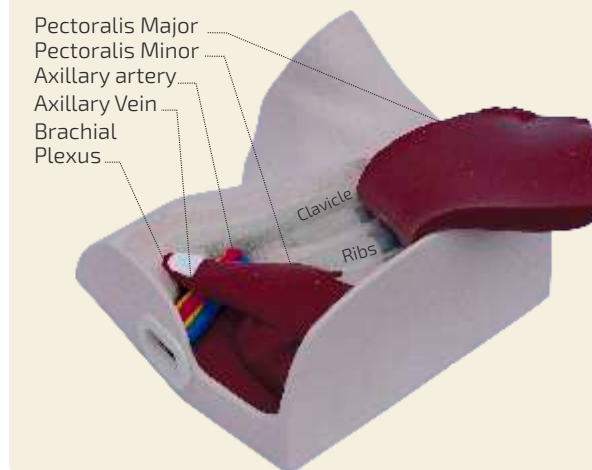
- Facilitates understanding of the anatomy of the breast and tissue layers of importance in breast surgery and local anesthetic infiltration techniques

INTERNAL LANDMARKS

Pectoralis major and minor muscles; Serratus muscles; Axillary artery; Axillary vein; Cords of the brachial plexus; Clavicle; Coracoid process; Ribs 1-4

EXTERNAL LANDMARKS

Breast anatomy



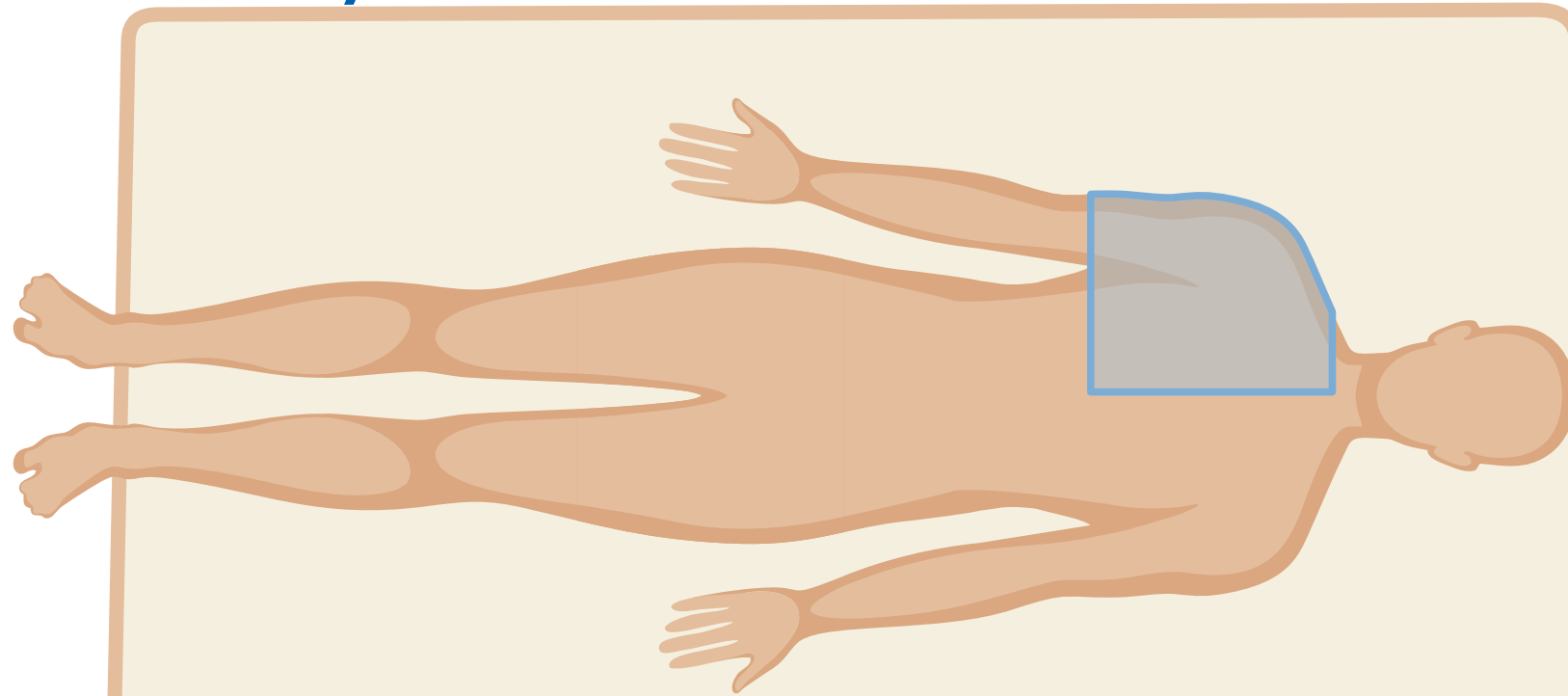
NYSORA SIMULATORS™

**LATERAL
OPEN BREAST**

LATERAL

INFRACLAVICULAR/PEC SIMULATOR

DISTAL



INSTRUCTIONS FOR CARE

When practicing injection:

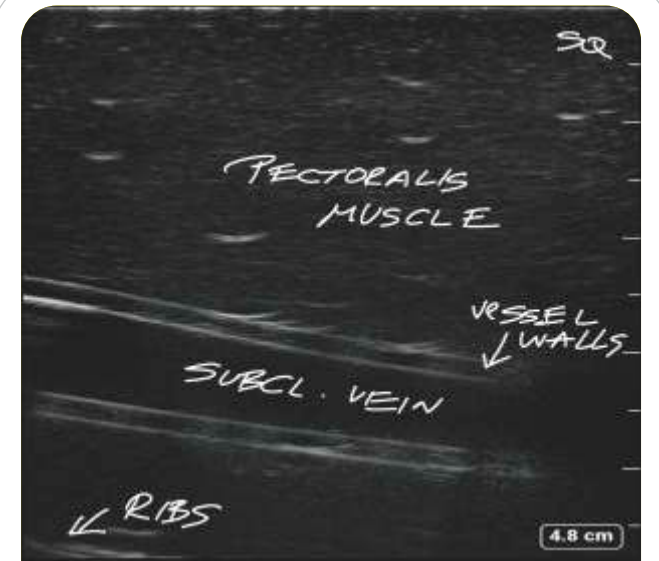
- Use only sterile water
- Wipe off and dry the SIMULATOR before storing

Warranty

Your **ULTRASOUND SIMULATOR** includes 1-Year limited warranty against manufacturing and material defects. Visit www.NYSORASIMULATORS.com/support for further information to register your SIMULATOR and activate the warranty

NYSORA 
SIMULATORS.COM

PL006 RevB



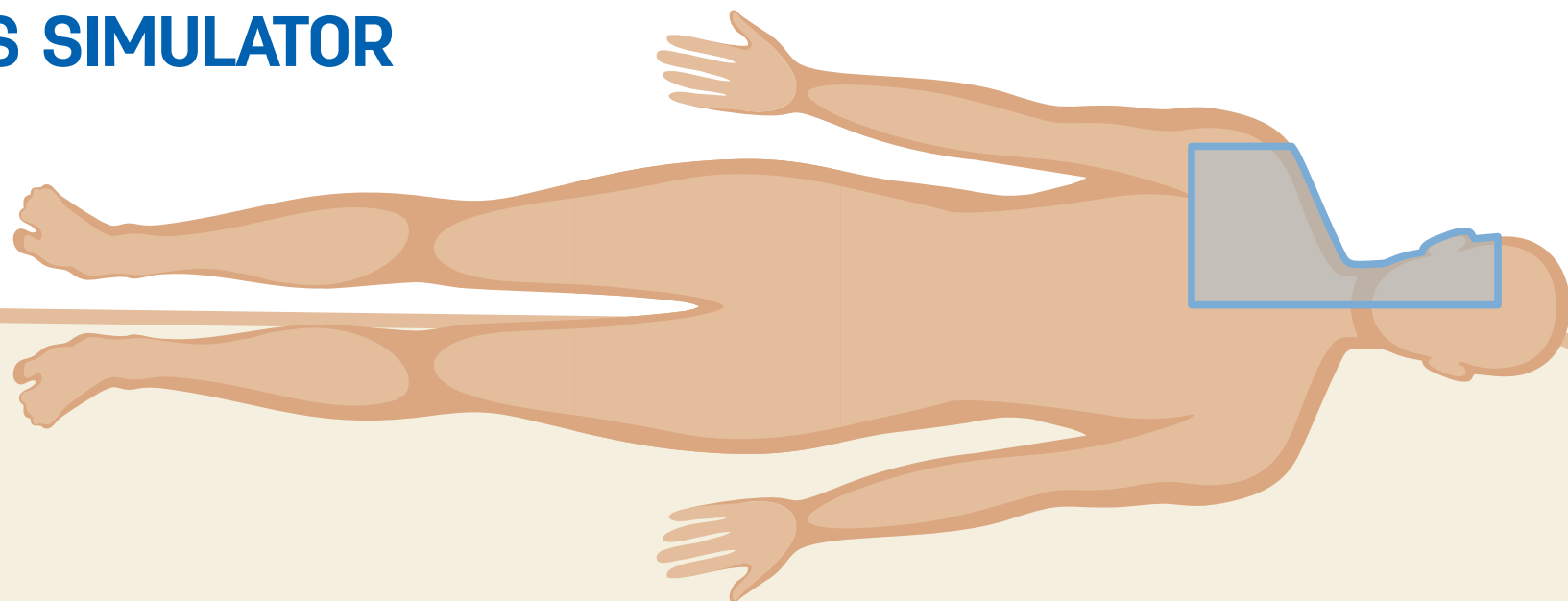
SIMULATOR IN USE

NYSORA  **SIMULATORS**™

DISTAL

INFRACLAVICULAR/PEC

INTERSCALENE & SUPRACLAVICULAR BLOCKS SIMULATOR



DISTAL

INSTRUCTIONS FOR CARE

1. Use **ONLY** needles with sharp bevel tip and diameter $\leq 22G$ to preserve the life-span of the **ULTRASOUND SIMULATOR**
2. Using needles of large caliber may create permanent damage, needle insertion track marks and require replacement of the tissue **SIMULATOR** insert sooner
3. **When practicing injection:**
 - a. Use only sterile water
 - b. Wipe off and dry the **SIMULATOR** before storing

Warranty

Your **ULTRASOUND SIMULATOR** includes 1-Year limited warranty against manufacturing and material defects. Visit www.NYSORASIMULATORS.com/support for further information to register your **SIMULATOR** and activate the warranty

LEGEND:

ASM - Anterior Scalene Muscle
MSM - Middle Scalene Muscle
C5, C6, C7 - Roots of C5, C6 and C7

NYSORA 
SIMULATORS.COM

PL006 RevB



SIMULATOR IN USE

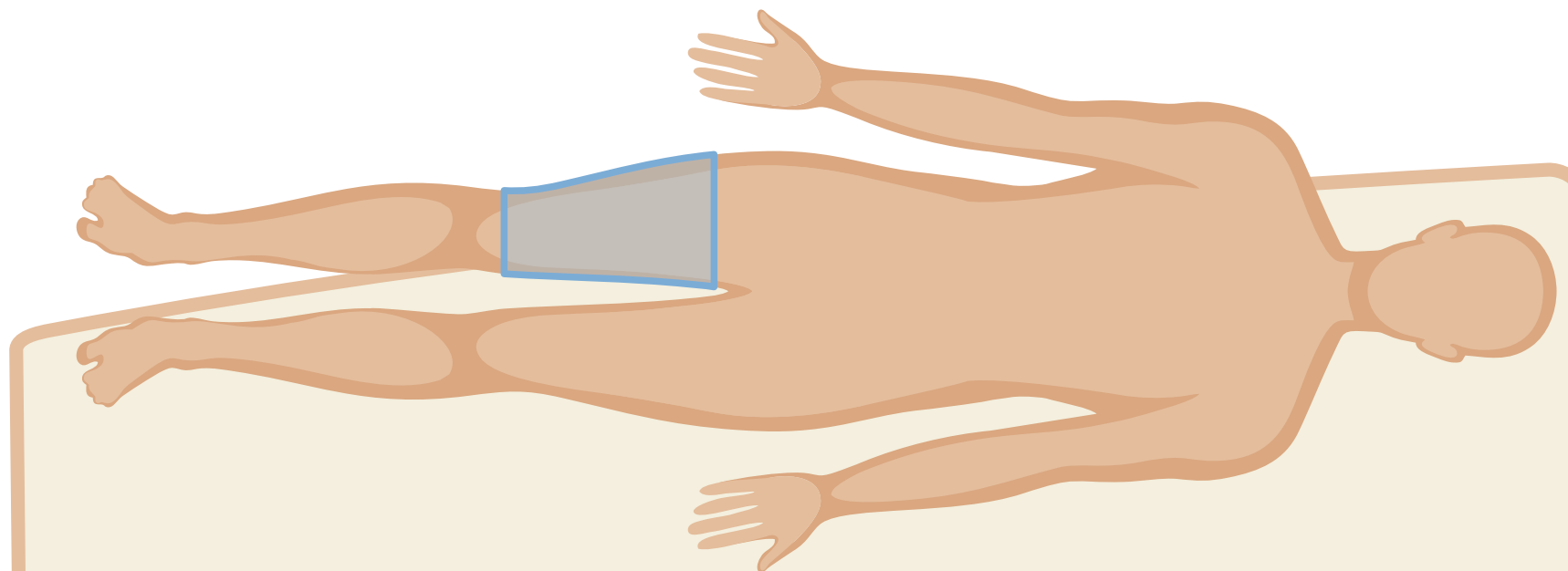
NYSORA  **SIMULATORS™**

DISTAL
INTERSCALENE BLOCK

DISTAL

ADDUCTOR CANAL BLOCK SIMULATOR

DISTAL



INSTRUCTIONS FOR CARE

1. Use **ONLY** needles with sharp bevel tip and diameter $\leq 22G$ to preserve the life-span of the ULTRASOUND SIMULATOR
2. Using needles of large caliber may create permanent damage, needle insertion track marks and require replacement of the tissue SIMULATOR insert sooner
3. **When practicing injection:**
 - a. Use only sterile water
 - b. Wipe off and dry the SIMULATOR before storing

LEGEND:

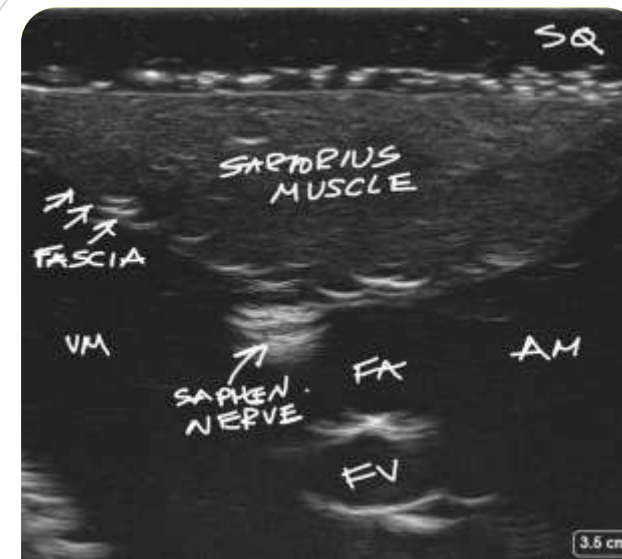
- SQ - Subcutaneous Tissue
- VM - Vastus Medialis
- FV - Femoral Vein
- FA - Femoral Artery
- AM - Adductor Magnus

NYSORA SIMULATORS.COM

Warranty

Your **ULTRASOUND SIMULATOR** includes 1-Year limited warranty against manufacturing and material defects. Visit www.NYSORASIMULATORS.com/support for further information to register your SIMULATOR and activate the warranty

PL006 RevB



SIMULATOR IN USE

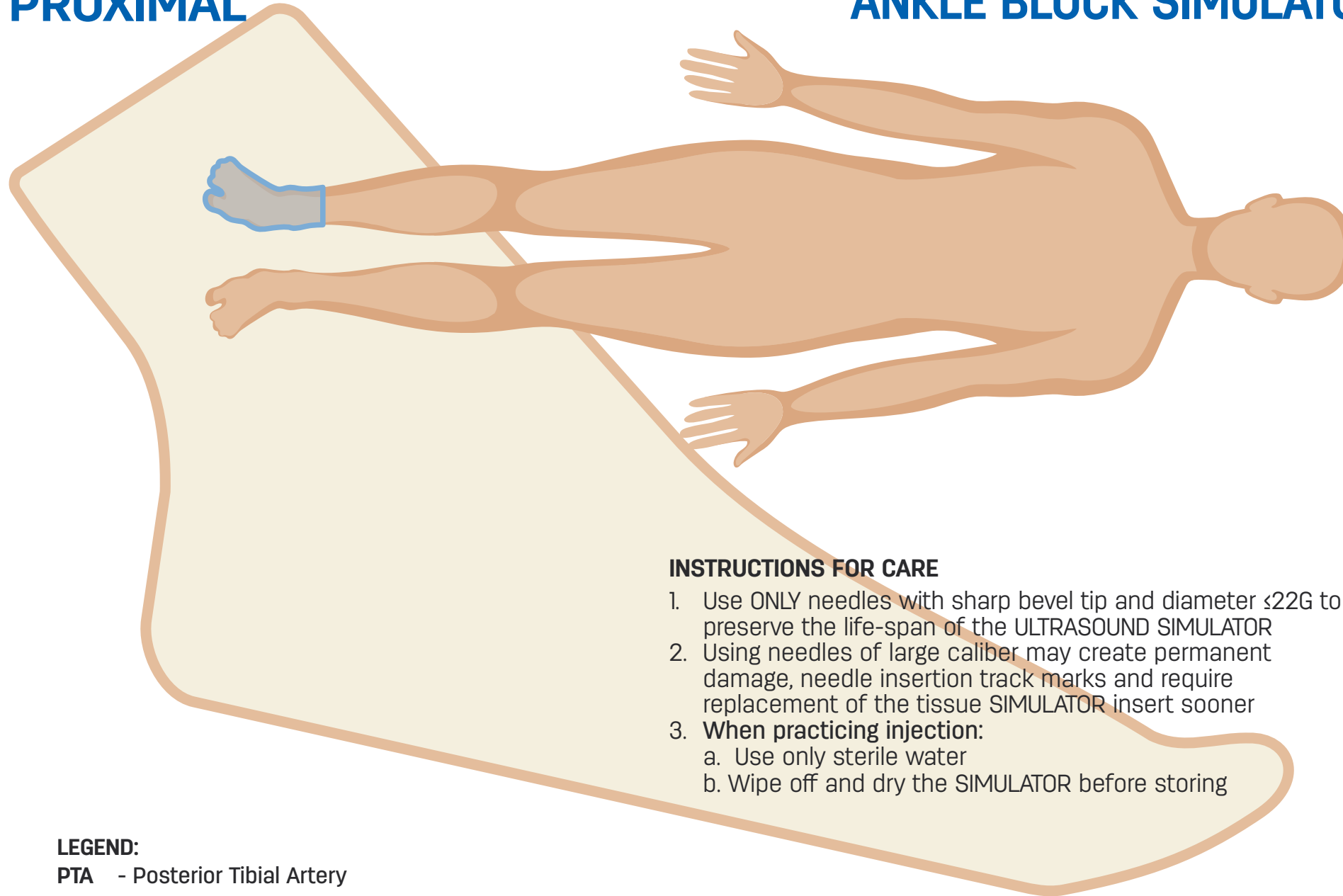
NYSORA SIMULATORS™

DISTAL

ADDUCTOR CANAL BLOCK

PROXIMAL

ANKLE BLOCK SIMULATOR



INSTRUCTIONS FOR CARE

1. Use **ONLY** needles with sharp bevel tip and diameter $\leq 22G$ to preserve the life-span of the **ULTRASOUND SIMULATOR**
2. Using needles of large caliber may create permanent damage, needle insertion track marks and require replacement of the tissue **SIMULATOR** insert sooner
3. **When practicing injection:**
 - a. Use only sterile water
 - b. Wipe off and dry the **SIMULATOR** before storing

LEGEND:

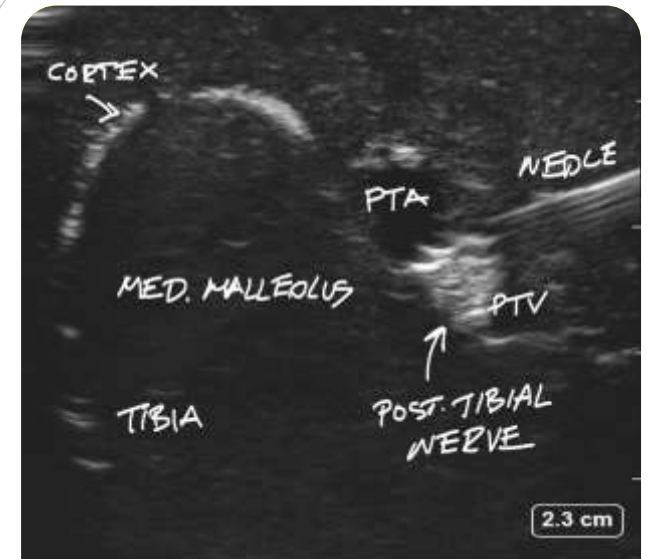
PTA - Posterior Tibial Artery



Warranty

Your **ULTRASOUND SIMULATOR** includes 1-Year limited warranty against manufacturing and material defects. Visit www.NYSORASIMULATORS.com/support for further information to register your **SIMULATOR** and activate the warranty

PL006 RevB



SIMULATOR IN USE

NYSORA SIMULATORS™

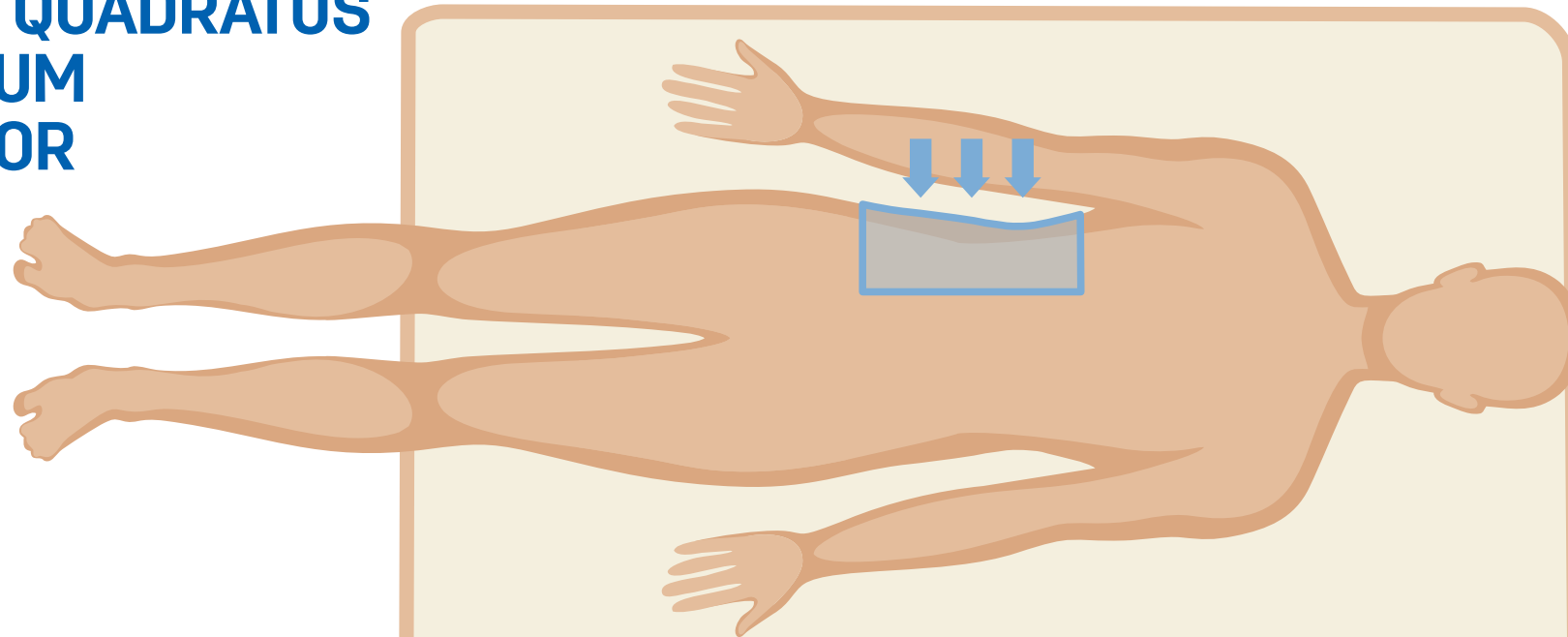
PROXIMAL ANKLE BLOCK

TAP AND QUADRATUS LUMBORUM SIMULATOR

DISTAL

LEGEND:

- SQ - Subcutaneous Tissue
- QL 1 - Quadratus Lumborum
- QL 2 - Quadratus Lumborum
- QL 3 - Quadratus Lumborum
- QLM - Quadratus Lumborum Muscle
- IOM - Internal Oblique Muscle
- TAM - Transverse Abdominis Muscle
- LDM - Latissimus Dorsi Muscle



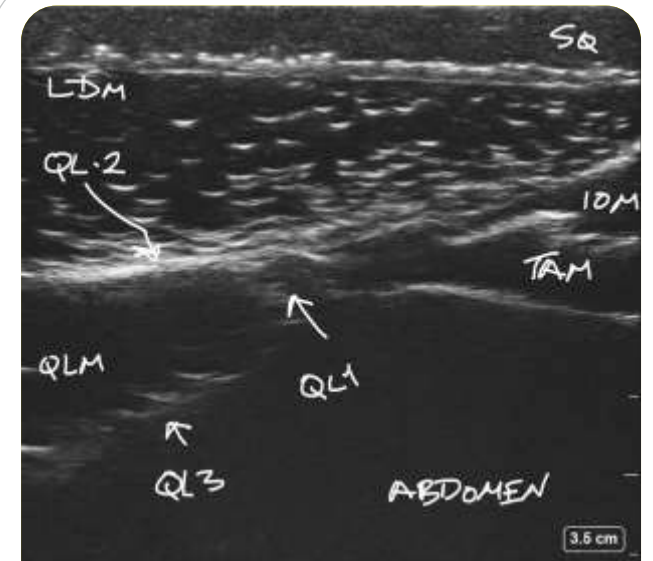
INSTRUCTIONS FOR CARE

1. Use ONLY needles with sharp bevel tip and diameter $\leq 22G$ to preserve the life-span of the ULTRASOUND SIMULATOR
2. Using needles of large caliber may create permanent damage, needle insertion track marks and require replacement of the tissue SIMULATOR insert sooner
3. **When practicing injection:**
 - a. Use only sterile water
 - b. Wipe off and dry the SIMULATOR before storing

Warranty

Your **ULTRASOUND SIMULATOR** includes 1-Year limited warranty against manufacturing and material defects. Visit www.NYSORASIMULATORS.com/support for further information to register your SIMULATOR and activate the warranty

PL006 RevB



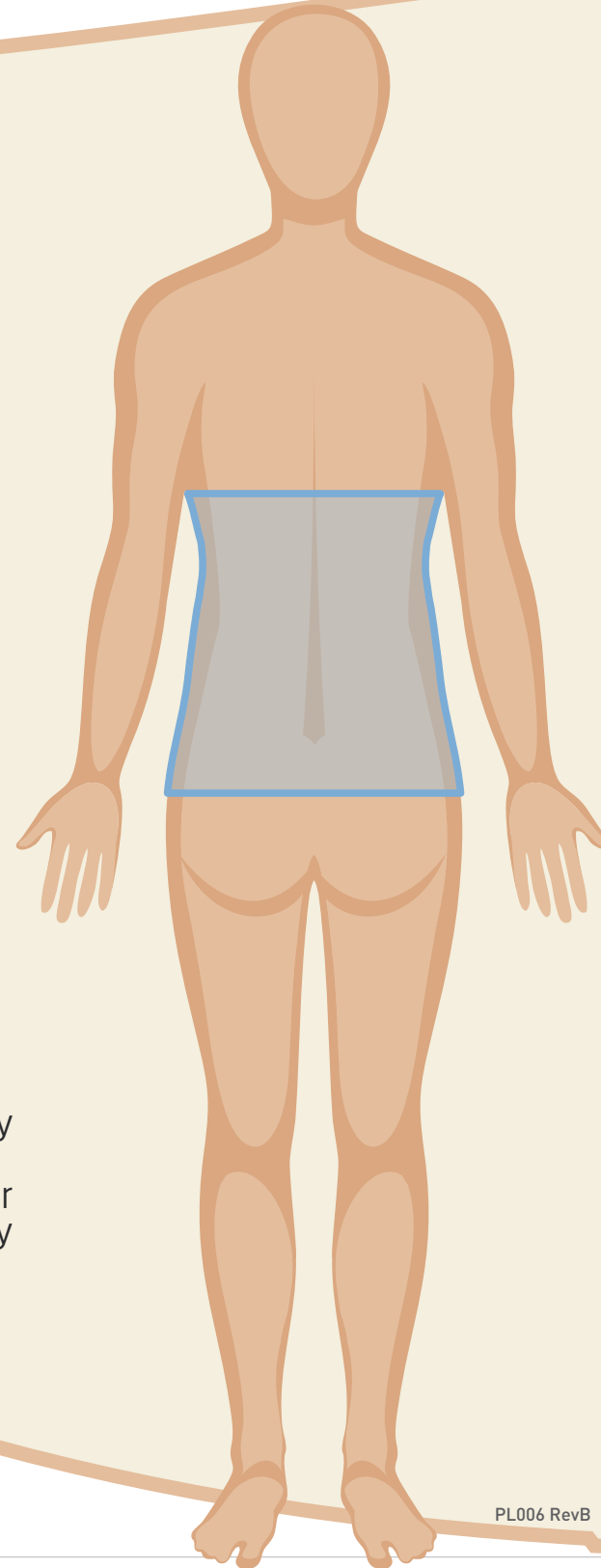
SIMULATOR IN USE

NYSORA SIMULATORS™

DISTAL

TAP AND QUADRATUS LUMBORUM

EPIDURAL SIMULATOR



INSTRUCTIONS FOR CARE

When practicing injection:

- Use only sterile water
- Wipe off and dry the SIMULATOR before storing

Warranty

Your **ULTRASOUND SIMULATOR** includes 1-Year limited warranty against manufacturing and material defects.

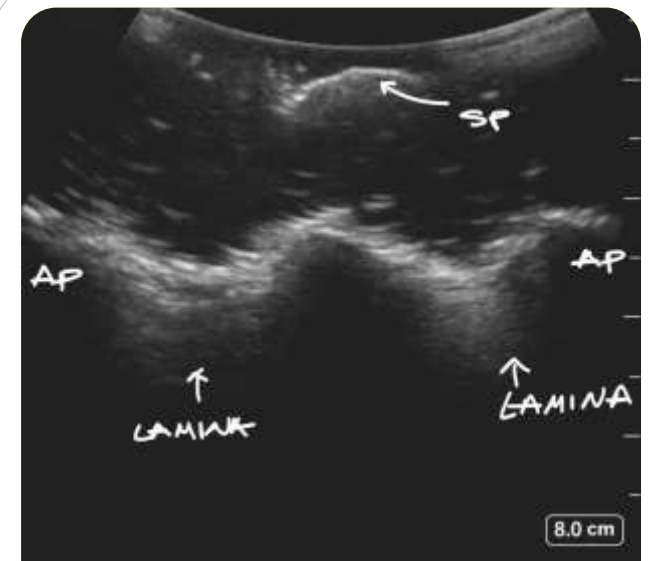
Visit www.NYSORASIMULATORS.com/support for further information to register your SIMULATOR and activate the warranty

NYSORA 
SIMULATORS.COM

LEGEND:

- SP - Process
AP - Articular Process

PL006 RevB

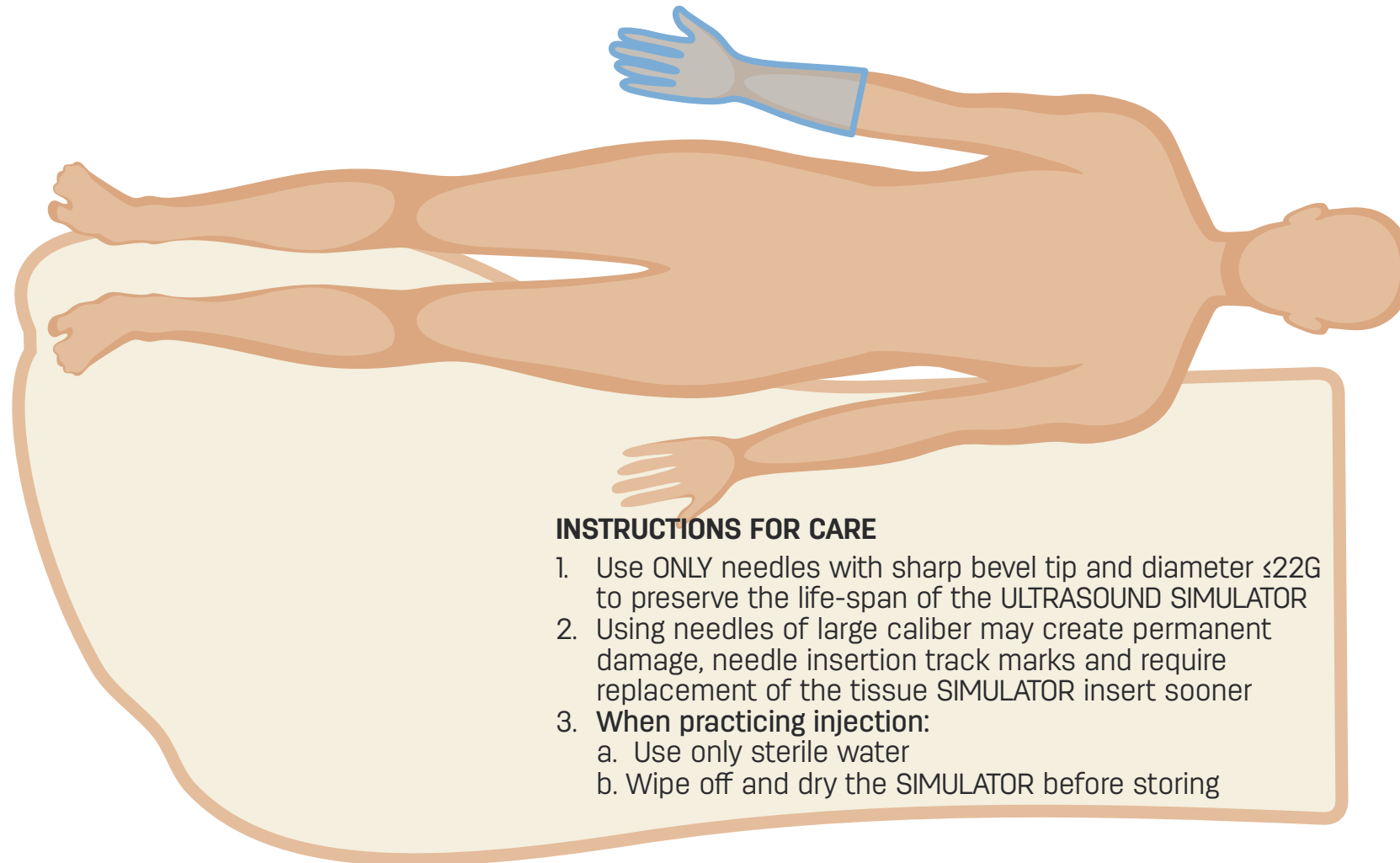


SIMULATOR IN USE

NYSORA  **SIMULATORS™**

**PROXIMAL
EPIDURAL**

WRIST BLOCK SIMULATOR



DISTAL

INSTRUCTIONS FOR CARE

1. Use **ONLY** needles with sharp bevel tip and diameter $\leq 22G$ to preserve the life-span of the **ULTRASOUND SIMULATOR**
2. Using needles of large caliber may create permanent damage, needle insertion track marks and require replacement of the tissue **SIMULATOR** insert sooner
3. **When practicing injection:**
 - a. Use only sterile water
 - b. Wipe off and dry the **SIMULATOR** before storing

LEGEND:

- SQ** - Subcutaneous Tissue
RA - Radial artery

NYSORA 
SIMULATORS.COM

Warranty

Your **ULTRASOUND SIMULATOR** includes 1-Year limited warranty against manufacturing and material defects. Visit www.NYSORASIMULATORS.com/support for further information to register your **SIMULATOR** and activate the warranty

PL006 RevB



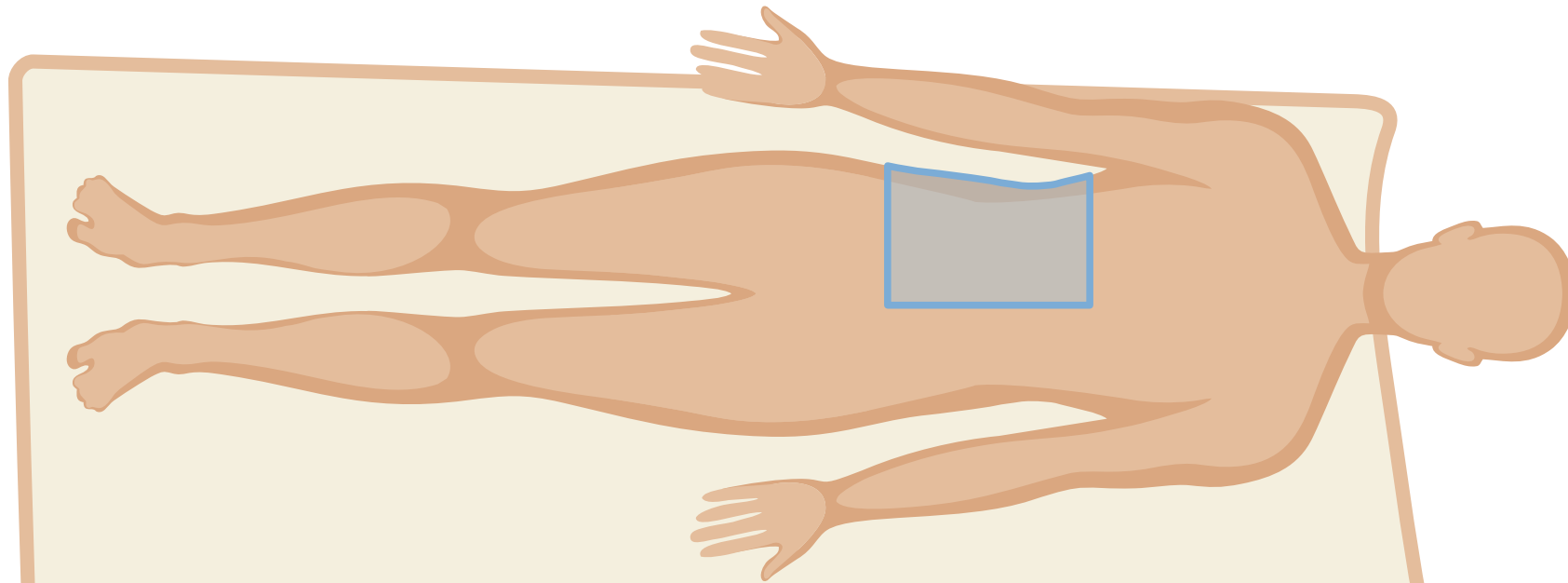
SIMULATOR IN USE

NYSORA  **SIMULATORS™**

DISTAL
WRIST BLOCK

TAP BLOCK SIMULATOR

DISTAL



INSTRUCTIONS FOR CARE

1. Use ONLY needles with sharp bevel tip and diameter $\leq 22G$ to preserve the life-span of the ULTRASOUND SIMULATOR
2. Using needles of large caliber may create permanent damage, needle insertion track marks and require replacement of the tissue SIMULATOR insert sooner
3. **When practicing injection:**
 - a. Use only sterile water
 - b. Wipe off and dry the SIMULATOR before storing

Warranty

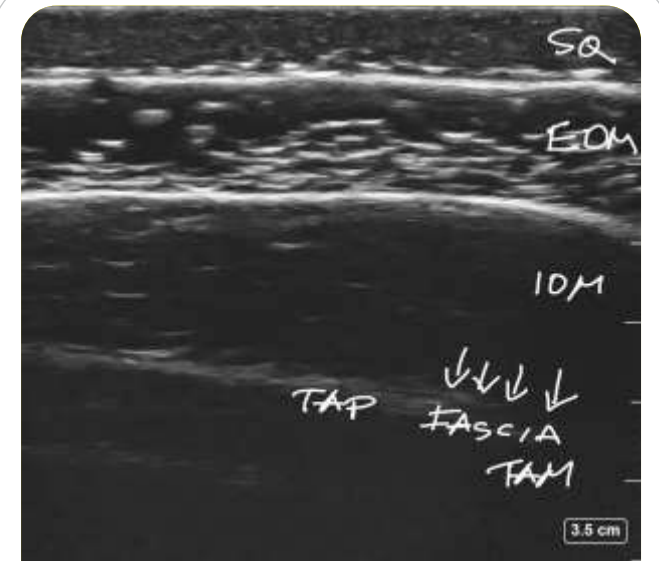
Your **ULTRASOUND SIMULATOR** includes 1-Year limited warranty against manufacturing and material defects. Visit www.NYSORASIMULATORS.com/support for further information to register your SIMULATOR and activate the warranty

NYSORA
SIMULATORS.COM

LEGEND:

SQ - Subcutaneous Tissue
EOM - External Oblique Muscle
IOM - Internal Oblique Muscle
TAP - Transverse Abdominis Plane
TAM - Transverse Abdominis Muscle

PL006 RevB



SIMULATOR IN USE

NYSORA SIMULATORS™

DISTAL
TAP BLOCK

PARAVERTEBRAL BLOCK SIMULATOR

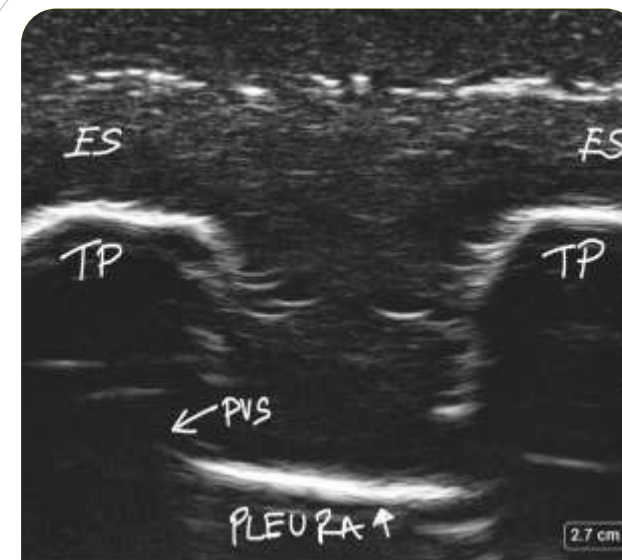
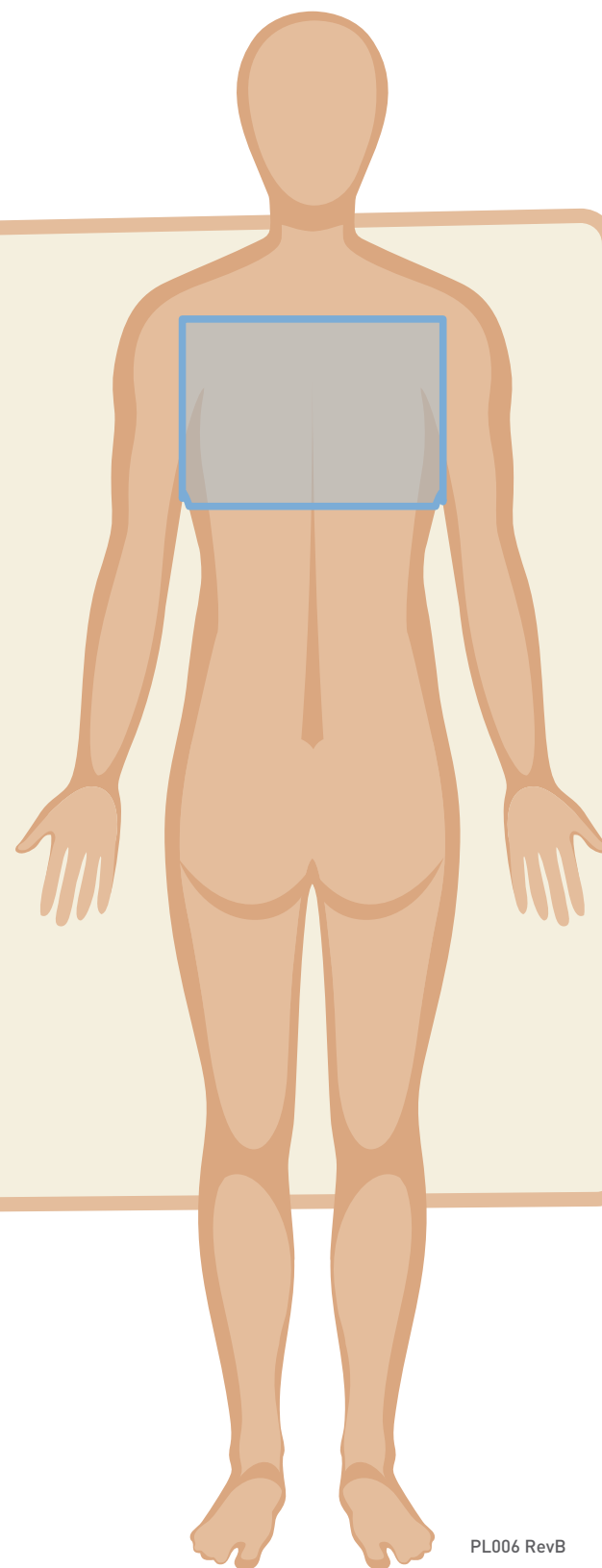
DISTAL

INSTRUCTIONS FOR CARE

1. Use ONLY needles with sharp bevel tip and diameter $\leq 22G$ to preserve the life-span of the ULTRASOUND SIMULATOR
2. Using needles of large caliber may create permanent damage, needle insertion track marks and require replacement of the tissue SIMULATOR insert sooner
3. When practicing injection:
 - a. Use only sterile water
 - b. Wipe off and dry the SIMULATOR before storing

Warranty

Your **ULTRASOUND SIMULATOR** includes 1-Year limited warranty against manufacturing and material defects. Visit www.NYSORASIMULATORS.com/support for further information to register your SIMULATOR and activate the warranty



SIMULATOR IN USE

NYSORA SIMULATORS.COM

LEGEND:

- ES - Erectores Spinae
- TP - Transverse Process
- PVS - Paravertebral Space

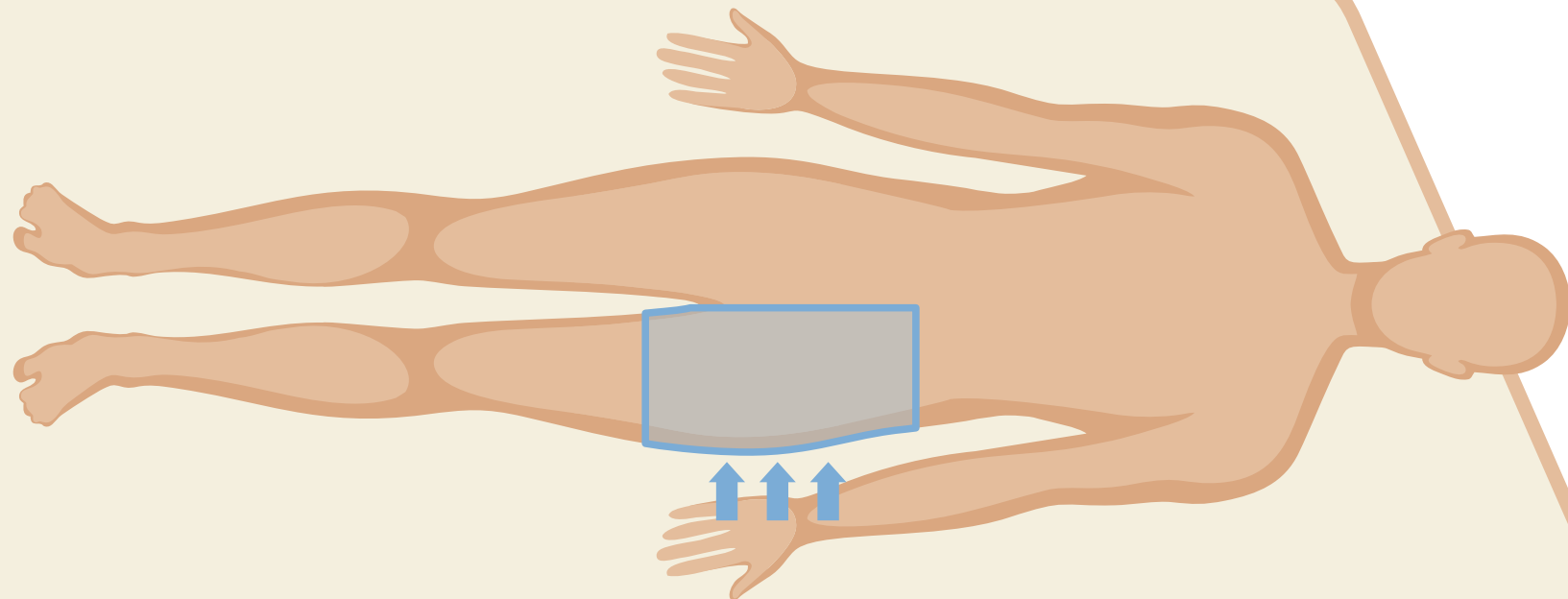
PL006 RevB

NYSORA SIMULATORS™

DISTAL

PARAVERTEBRAL BLOCK

SUBGLUTEAL SCIATIC BLOCK SIMULATOR



DISTAL

INSTRUCTIONS FOR CARE

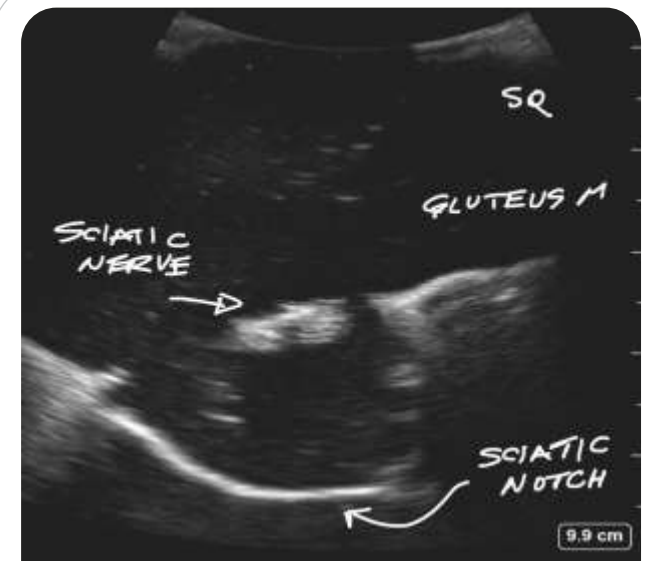
1. Use **ONLY** needles with sharp bevel tip and diameter $\leq 22G$ to preserve the life-span of the ULTRASOUND SIMULATOR
2. Using needles of large caliber may create permanent damage, needle insertion track marks and require replacement of the tissue SIMULATOR insert sooner
3. **When practicing injection:**
 - a. Use only sterile water
 - b. Wipe off and dry the SIMULATOR before storing

Warranty

Your **ULTRASOUND SIMULATOR** includes 1-Year limited warranty against manufacturing and material defects. Visit www.NYSORASIMULATORS.com/support for further information to register your SIMULATOR and activate the warranty



PL006 RevB



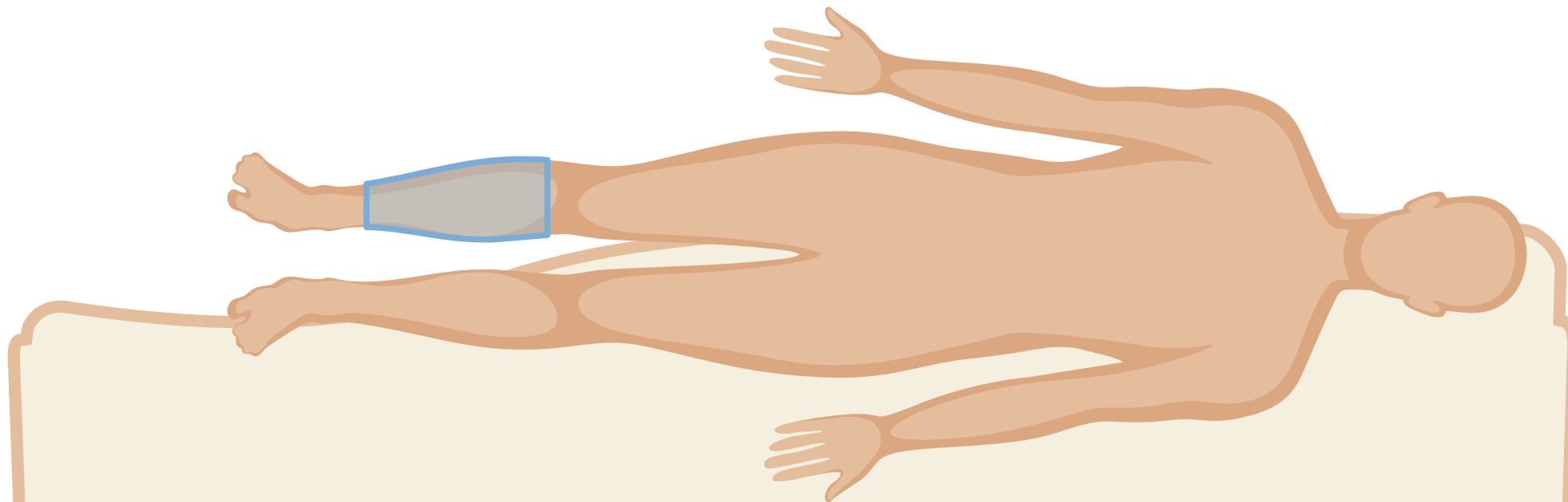
SIMULATOR IN USE

NYSORA SIMULATORS™

DISTAL

SUBGLUTEAL SCIATIC BLOCK

POPLITEAL AND IPAC NERVE BLOCK SIMULATOR



DISTAL

INSTRUCTIONS FOR CARE

1. Use **ONLY** needles with sharp bevel tip and diameter $\leq 22G$ to preserve the life-span of the **ULTRASOUND SIMULATOR**
2. Using needles of large caliber may create permanent damage, needle insertion track marks and require replacement of the tissue **SIMULATOR** insert sooner
3. **When practicing injection:**
 - a. Use only sterile water
 - b. Wipe off and dry the **SIMULATOR** before storing

LEGEND:

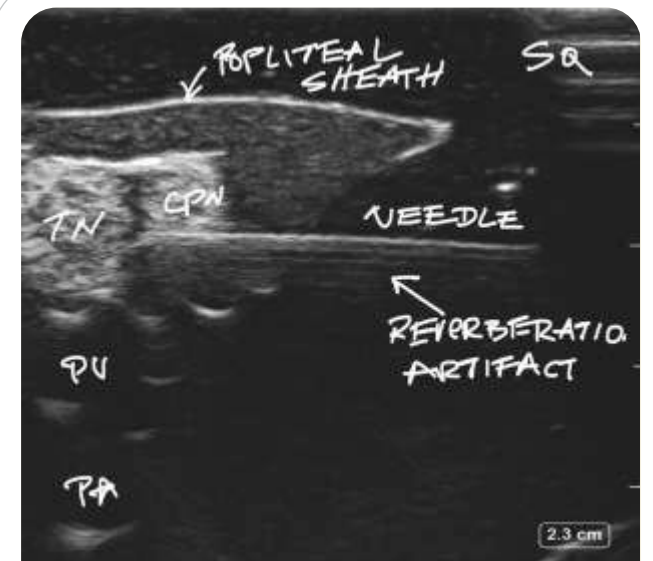
- SQ** - Subcutaneous tissue
TN - Tibial Nerve
CPN - Common Peroneal Nerve
PA - Popliteal Artery

NYSORA 
SIMULATORS.COM

Warranty

Your **ULTRASOUND SIMULATOR** includes 1-Year limited warranty against manufacturing and material defects. Visit www.NYSORASIMULATORS.com/support for further information to register your **SIMULATOR** and activate the warranty

PL006 RevB

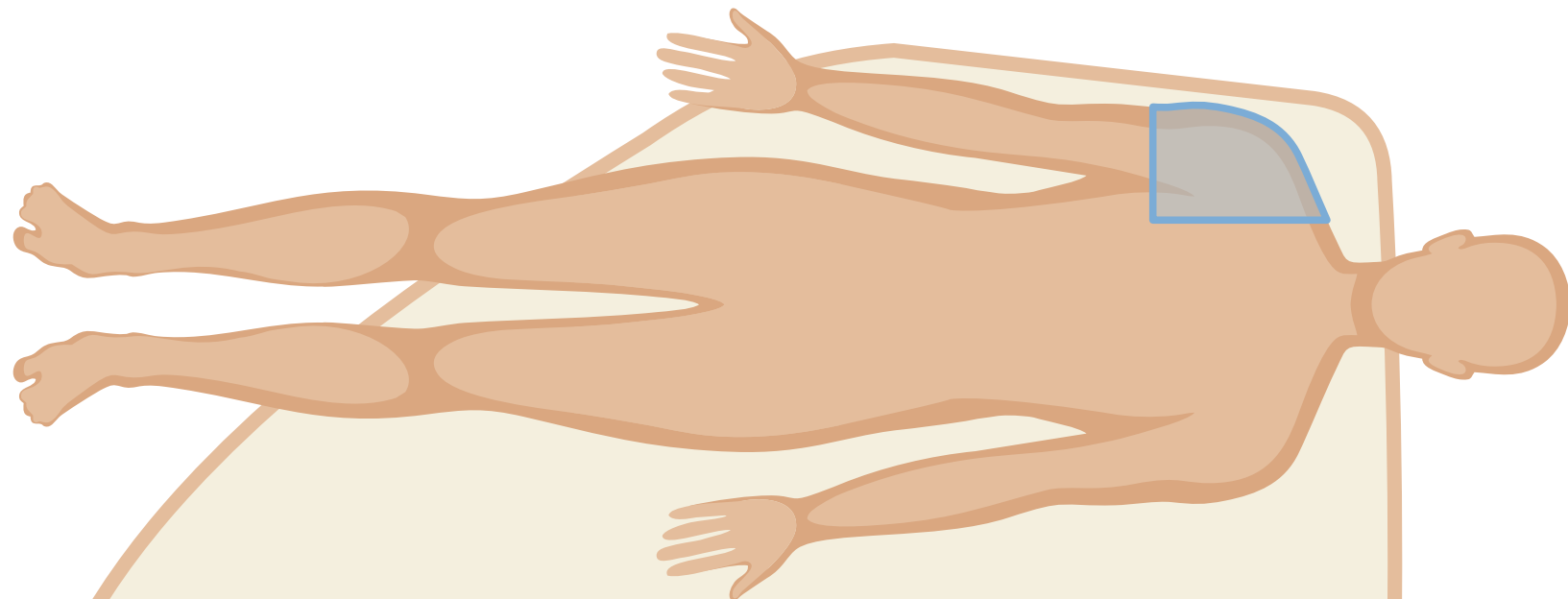


SIMULATOR IN USE

NYSORA  **SIMULATORS™**

DISTAL
POPLITEAL

SUPRASCAPULAR NERVE BLOCK SIMULATOR



MEDIAL

INSTRUCTIONS FOR CARE

1. Use ONLY needles with sharp bevel tip and diameter $\leq 22G$ to preserve the life-span of the ULTRASOUND SIMULATOR
2. Using needles of large caliber may create permanent damage, needle insertion track marks and require replacement of the tissue SIMULATOR insert sooner
3. **When practicing injection:**
 - a. Use only sterile water
 - b. Wipe off and dry the SIMULATOR before storing

Warranty

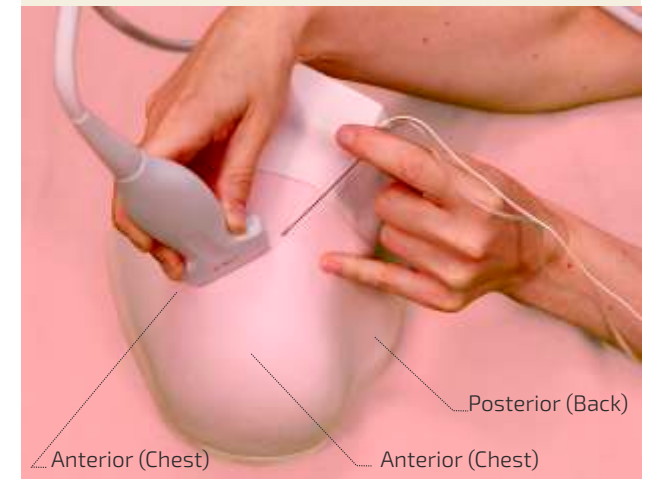
Your **ULTRASOUND SIMULATOR** includes 1-Year limited warranty against manufacturing and material defects. Visit www.NYSORASIMULATORS.com/support for further information to register your SIMULATOR and activate the warranty

LEGEND:

- SS - Suprascapular Muscle
- SS - Suprascapular Nerve
- SS - Suprascapular Notch



PL006 RevB



SIMULATOR IN USE

NYSORA SIMULATORS™

MEDIAL

SUPRASCAPULAR NERVE BLOCK

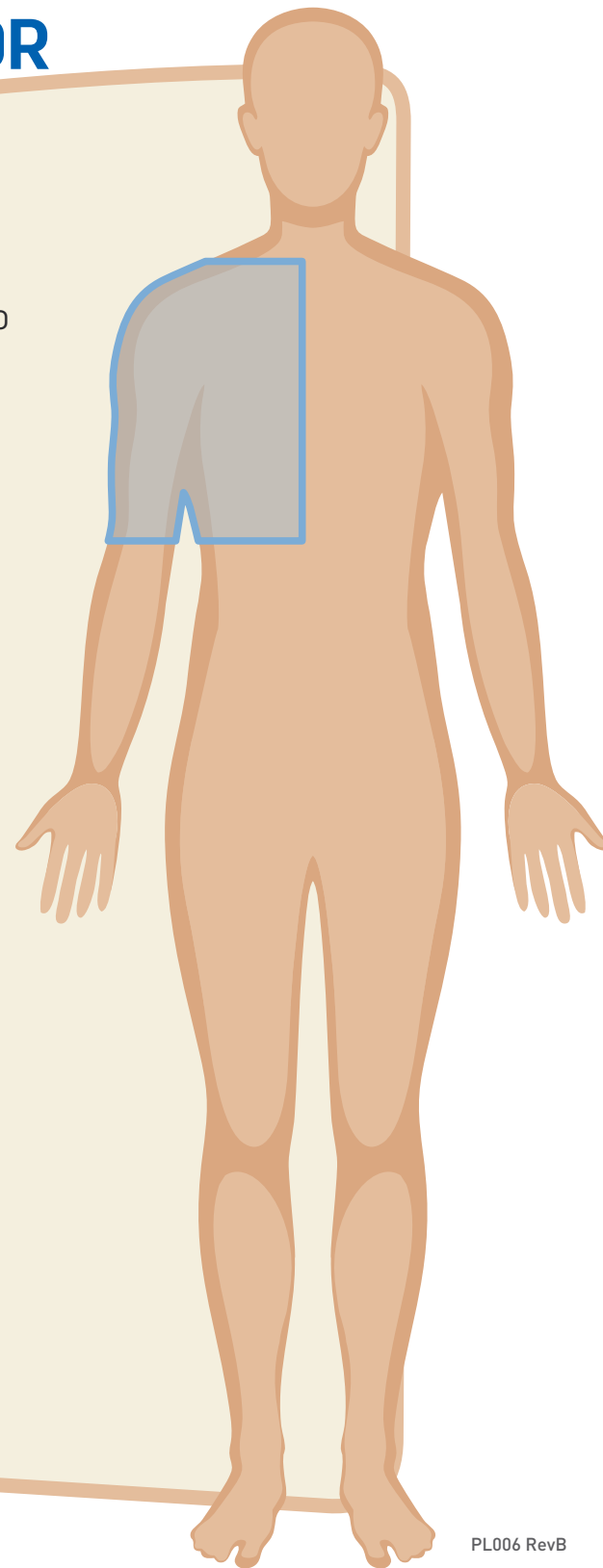
AXILLARY BRACHIAL PLEXUS SIMULATOR

INSTRUCTIONS FOR CARE

1. Use **ONLY** needles with sharp bevel tip and diameter $\leq 22G$ to preserve the life-span of the ULTRASOUND SIMULATOR
2. Using needles of large caliber may create permanent damage, needle insertion track marks and require replacement of the tissue SIMULATOR insert sooner
3. **When practicing injection:**
 - a. Use only sterile water
 - b. Wipe off and dry the SIMULATOR before storing

Warranty

Your **ULTRASOUND SIMULATOR** includes 1-Year limited warranty against manufacturing and material defects. Visit www.NYSORASIMULATORS.com/support for further information to register your SIMULATOR and activate the warranty



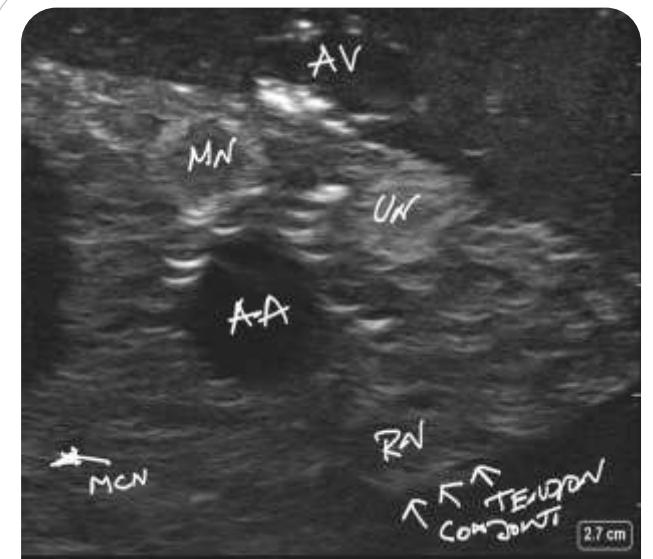
PL006 RevB

DISTAL

LEGEND:

- AV - Axillary Vein
- MN - Median Nerve
- UN - Ulnar Nerve
- AA - Axillary Artery
- RN - Radial Nerve
- MCN - Musculocutaneous nerve

NYSORA SIMULATORS.COM



SIMULATOR IN USE

NYSORA SIMULATORS™

DISTAL

AXILLARY BRACHIAL PLEXUS