



Slachthuislaan 1, Bus 102,
3000 Leuven, Belgium
VAT: BE 0673.704.095
+32 492 80 76 76
info@medxpress.pro

Introducing:

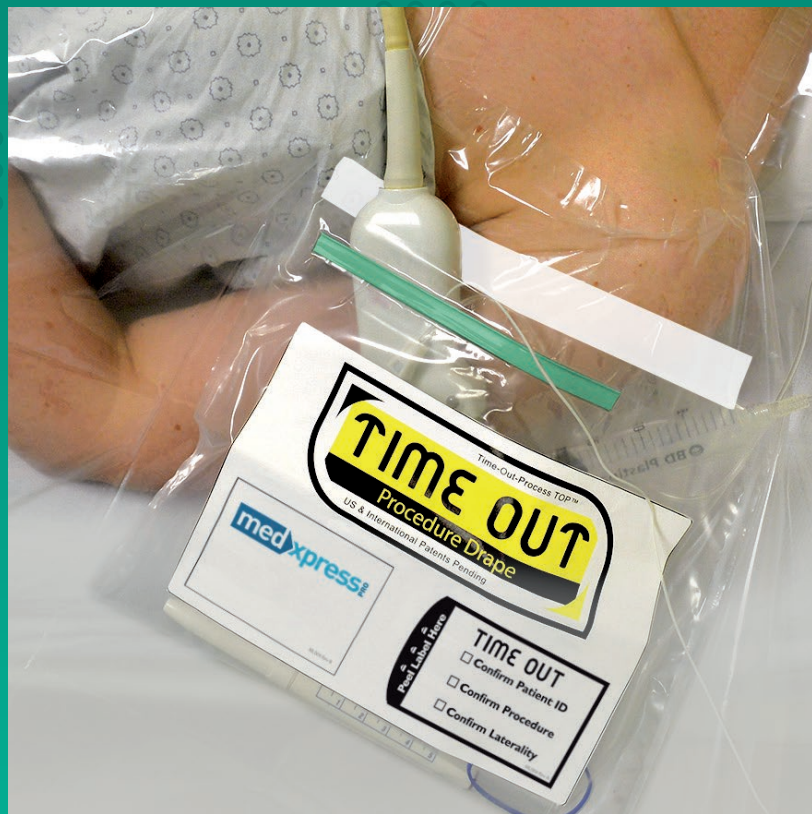
EZCOVER[®]

**Universal Time-Out Procedure Drapes
Ultrasound Probe Covers**

- Nerve Blocks
- Spinal & Epidural Anesthesia
- Vascular Access

AS EASY AS 1-2-3

Nerve Blocks & Vascular Access



Spinal & Epidural Anesthesia

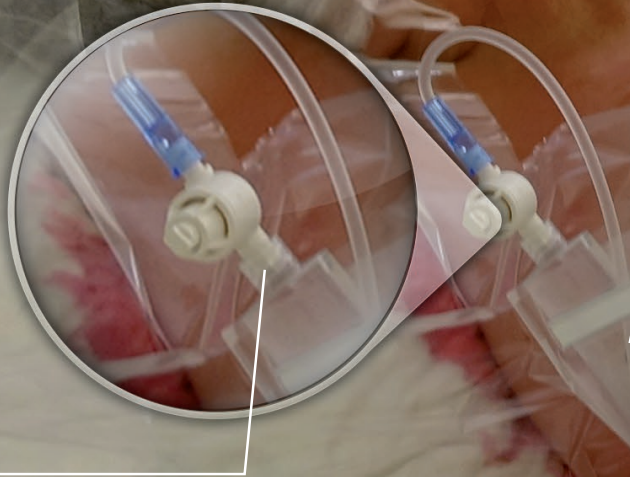


AS EASY AS 1-2-3

EZCOVER[®]

Interscalene Block

1) Equipment and/or US probe expandable pocket



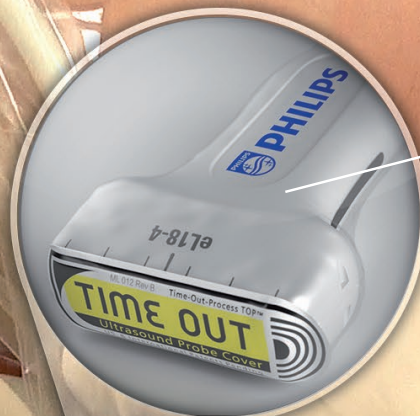
2) Syringe, pressure monitor and needle in the pocket at the operators reach prevents contamination by sliding off cover and dropping to floor



3) Optional documentation of the check-list procedure and/or triple-monitoring.

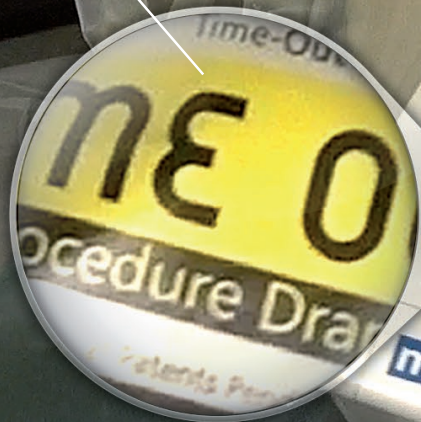


EZCOVER®



1) Ultrasound probe is placed in the pocket to avoid falling on the floor

2) "Time Out" sticker reminding clinicians to perform check-list at the point of care.



3) Malleable strip that allows adjustment of the size of the pocket to the equipment.

Axillary Block

1) Malleable strip that allows adjustment of the size of the pocket for equipment (e.g. syringe, needle, catheter)

2) Absorbing strip (absorbs blood, etc)

3) Removable "Time Out" reminder and documentation stickers for medical records.

4) Pocket for the equipment (e.g. syringe, needle, catheter, ultrasound probe)

1) Perforated for easy removal of the drape after epidural catheter placement.

2) Spinal needle and Local Anesthetic

4) Large fenestration to facilitate ultrasound-guided procedures

5) Absorbent strip for blood

3) Reminder to perform Time Out (Check list or Stop before You Block!)

Spinal & Epidural Anesthesia

